

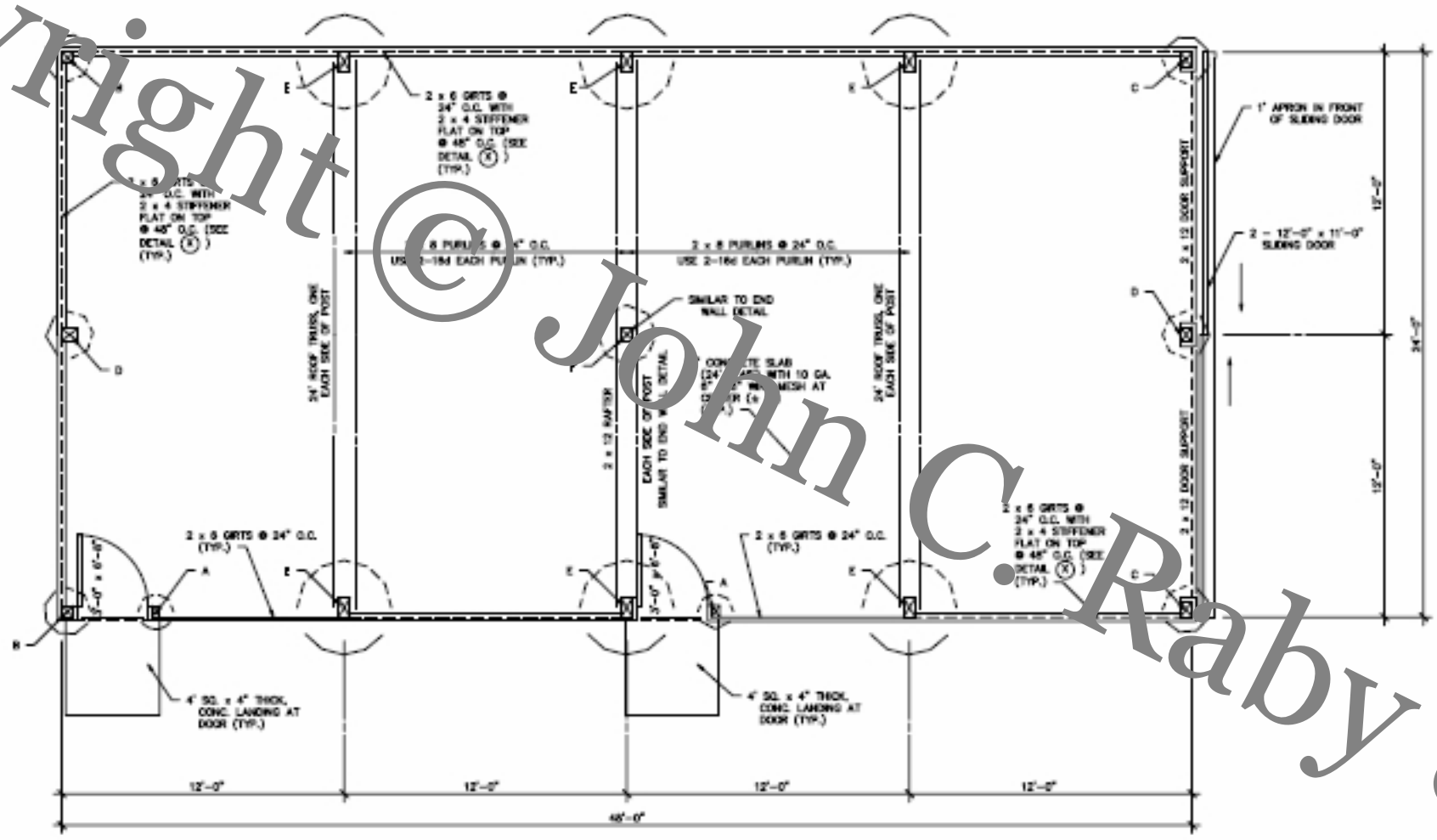
Copyright

©

John C. Raby & Associates

Raby & Associates

Associates



PLAN
SCALE: 1/4" = 1'-0"

- BUILDING NOTES:**
- OPTIONAL GUTTERS WITH DOWNSPOUTS ALONG BOTH EAVES
 - INSULATION: ROOF ONLY REQUIRED
1 1/2" FIBERGLASS BLANKET WITH WHITE VINYL FACING (R-5)
 - OPTIONAL 1' FIBERGLASS SKYLIGHT PANELS UNDER BOTH EAVES
 - ALL POST TO BE PRESSURE TREATED HICHLUCK FR. NO. 1, OR: ONE SEE LARGER USING HEM FR. NO. 2 (EXAMPLE: 6 x 6 TO 8 x 8) TREATMENT "CHEMURITE" AT 0.60 RETENTION
 - SEE DETAIL (A) FOR MAXIMUM 20d GALV. SPKRE DENSITY AT CONCRETE CAP
 - 20d GALV. SPKRS TO BE EQUALLY DISTRIBUTED ON ALL 4-SIDES OF POST

NOTE: CHANGES ON THESE PLANS SHALL NOT BE ALLOWED WITHOUT WRITTEN APPROVAL BY THE DESIGNER

POST SCHEDULE

SYMBOL	POST SIZE	FOOTING SIZE	20d GALV. SPKRS AT CONC. CAP
A	4 x 6 RGH DOOR	10" DIA. x 2'-0" DEEP	NO CONCRETE CAP REQUIRED
B	6 x 6 RGH CORNER	34" DIA. x 4'-0" DEEP	36 (9 EA/SIDE)
C	6 x 6 RGH CORNER	34" DIA. x 4'-0" DEEP	36 (9 EA/SIDE)
D	6 x 6 RGH END WALL	30" DIA. x 4'-0" DEEP	36 (9 EA/SIDE)
E	6 x 6 RGH TRUSS SUP	40" DIA. x 4'-0" DEEP	52 (13 EA/SIDE)
	6 x 6 RGH RAFTER POST	30" DIA. x 4'-0" DEEP	44 (11 EA/SIDE)

NO.	REVISION	DATE	BY

JOHN C. RABY & ASSOCIATES
CIVIL & STRUCTURAL ENGINEERS
P.O. BOX 505 REPUBLIC WA. 99166
505-775-2552

JOB NAME:
FOR:

DATE: SCALE: DRAWN BY:

SHEET:

DO NOT SCALE DIMENSIONS FROM BLUEPRINTS